



Welcome to

Prague!

12th

European Congress of Internal Medicine

(European Federation of Internal Medicine EFIM)

2–5 October, 2013 | Prague, Czech Republic
www.efim2013.org

1st Announcement

INTRODUCTION

Dear Colleagues,



I am privileged to welcome you to the **European Congress of Internal Medicine** to be held in Prague from **October 2–5, 2013**. The congress will cover the broad spectrum of topics connected with internal medicine. Before all we are going to focus on cardiovascular diseases, metabolism – diabetes, obesity and cardiometabolic syndrome included endocrinology and new developments in pharmacological treatment in internal medicine. This is an impressive collection of topics but the congress promises much more.

We know how specialized our subspecialties are yet we rarely have the time to enjoy learning about them due to our demanding schedules and hectic lifestyles. The Congress of internal medicine has an obligation to bring the most exciting and relevant topics from these fields, topics which relate to all of us, topics which can only enhance your development as a medical professional.

We guarantee a congress that will deliver as rich an opportunity to improve your knowledge as possible and provide you the chance to discuss topics you are interested in with leading authorities of their fields. Of course, no visit to Prague would be complete without the chance to discover the charm, spirit and beauty of our golden city of Prague. If you need any additional information, do not hesitate to contact us.

I look forward to seeing you in Prague!

Prof. Richard Ceska, MD, PhD.

President of the Czech Society of Internal Medicine
Congress President EFIM 2013

PRELIMINARY SCIENTIFIC PROGRAMME

ESC/CSC/EFIM Joint Session on Cardiology

Chairs: D. Wood, R. Ceska

D. Wood (Great Britain): European guidelines – Prevention of CVD

J. Hradec (Czech Republic): European guidelines – Heart failure

P. Widimsky (Czech Republic): European guidelines – Myocardial Infarction

ESH/EFIM Joint Session – Hot Topics in Hypertension I.

Chairs: R. Cifkova, P. Nilsson

G. S. Stergiou (Greece): Home and ambulatory blood pressure monitoring

A. Januszewicz (Poland): Obstructive sleep apnoea and hypertension

P. Nilsson (Sweden): Hypertension in diabetes

ESH/EFIM Joint Session – Hot Topics in Hypertension II.

Chairs: E. Grossman, C. Farsang

R. Cifkova (Czech Republic): Epidemiology of hypertension in Europe

C. Farsang (Hungary): Resistant hypertension

J. Widimsky jr (Czech Republic): Renal denervation

EULAR/ČRS/EFIM Joint Session – Rheumatology

Chairs: K. Pavelka, E. Kucharz

E. Kucharz (Poland): Cardiovascular complications in RA

K. Pavelka (Czech Republic): Axial spondylarthritis

J. Vencovsky (Czech Republic): Myositis

EFLM/CSKB/EFIM Joint Session

Clinical Biochemistry – Laboratory Medicine and Internal Medicine

Chairs: I. Watson, T. Zima

T. Zima (Czech Republic): Tumour markers – using in the general practice – screening, monitoring, effectiveness

I. Watson (Great Britain): Aspects of POCT – effectiveness and patients safety

J. Berg (Great Britain): Pathology Harmony; a pragmatic and scientific approach to unfounded variation in the clinical laboratory

IAS/EFIM/EAS Joint Session

100 years after Anitschkow – What have we learned over the last century?

Chairs: L. Tokgozoglu, M. Vrablik

L. Tokgozoglu (Turkey): Atherosclerosis – from Anitschkow to global risk assessment

W. Koenig (Germany): Atherosclerosis – biomarkers, non-invasive and invasive diagnosis

A. Zamboni (Italy): Current treatment of HLP/DLP

A. Corsini (Italy): Future and experimental therapy of HLP/DLP

R3i/EFIM Joint Session

Residual Risk – What does it mean? How to influence it?

Chairs: J. CH. Fruchart, E. Shlyakhto

J. CH. Fruchart (France): R3i

R. Ceska (Czech Republic): Non pharmacological treatment of children with metabolic syndrome

A. Zambon (Italy): Pharmacological treatment of residual risk

ERA-EDTA/ČNS/EFIM Joint Session on Nephrology I.

New guidelines for the diagnosis and treatment of patients with chronic kidney disease

Chairs: A. Wiecek, C. Wanner

A. Wiecek (Poland): Treatment of anemia in chronic kidney disease

I. Rychlik (Czech Republic): Treatment of hypertension in chronic kidney disease

C. Wanner (Germany): Treatment of dyslipidemia in chronic kidney disease

ERA-EDTA/ČNS/EFIM Joint Session on Nephrology II.

Targeted treatment in systemic diseases with renal involvement

Chairs: V. Tesar, R. Jones

R. Jones (Great Britain): Rituximab in the treatment of glomerular disease (ANCA-associated vasculitis, lupus nephritis, membranous nephropathy)

V. Tesar (Czech Republic): Belimumab in systemic lupus erythematosus

R. Rysava (Czech Republic): Eculizumab in hemolytic uremic syndrome

New horizons in Lipid Lowering Therapy

Chairs: K. Parhofer, D. Sereni

R. Ceska (Czech Republic): Familial Hypercholesterolemia

K. Parhofer (Germany): PCSK-9 and new directions of treatment of Hypercholesterolemia

E. Bruckert (France): Screening programmes for FH

Pulmonary Hypertension

Chairs: A. Torbicki, A. Linhart

P. Jansa (Czech Republic): Screening and early diagnosis of pulmonary HT

A. Linhart (Czech Republic): Echocardiography in the diagnosis of pulmonary HT

A. Torbicki (Poland): Treatment of pulmonary HT

Pneumology

Chair: V. Kolek

COPD 2013 - disease or syndrome?

Bronchial asthma - a good diagnosis

Clinical guidelines for the management of community acquired pneumonia – how real they are

Incidentalomas in Endocrinology

Chairs: M. Krsek, M. Terzolo

R. Paschke (Germany): Thyroid incidentalomas (nodules)

M. Terzolo (Italy): Adrenal incidentalomas

M. Kršek (Czech Republic): Pituitary incidentalomas

Metabolic Syndrome and DMT2

Chairs: D. Dicker, A. Elis

D. Dicker (Israel): Fatty Heart – A new cardiovascular risk factor for the metabolic patient?

E. Grossman (Israel): Hypertension in the obese and metabolic patient, should we treat differently?

M. Rapoport (Israel): Hyperglycemia management in patients admitting internal medicine department – do we know how?

Hot Topics in Internal Medicine

Chairs: M.D. Cappellini, J. W. F. Elte

F. Mantero (Italy): Primary aldosteronism – update

Ch. Davidson (Great Britain): Atrial fibrillation

F. Bosch (The Netherlands): The role of ultrasound in the acutely ill medical patient

Infectious disease

Chair: J. Garau

J. Garau (Spain): Influenza

M. Colombo (Italy): Viral hepatitis

Anemia in chronic diseases

Chair: I. Bruckner (Romania)

D. Sereni (France): Anemia in the elderly

D. Bartos (Romania): Anemia and heart failure

Diabetes mellitus

Chairs: J. W. F. Elte, J. Skrha

J. Skrha (Czech Republic): Modern trends in the treatment of Type 2 diabetes

I. Tkac (Slovakia): The role of diabetic environment and genetic background in the development of cardiovascular disease in diabetes

J. W. F. Elte (The Netherlands): Diabetes and the liver – chicken or egg?

Cardiometabolic Risk – Gender oriented

Chair: P. M. Schumm-Draeger

Gastroenterology

Chair: S. Lindgren

Round Table

Opportunities of Internal Medicine in Europe and in the USA

Chairs: P. Conthe, M. Cooke

M. Cooke (USA) President of ACP: The role of internists in America

P. Conthe (Spain): The role of internists in different setting through Europe

Opportunities of Internal Medicine

Chairs: M. D. Cappellini, W. O. Bauer

J. G. Alegria (Spain): Efficient clinical management in Internal Medicine: Measuring quality of care in your IM unit

A. M. Baptista (Portugal): Acute medicine: Internist in emergency room, directing and bedside working with the patient

P. M. Schumm-Draeger (Germany): Chronic disease: A multidisciplinary approach, internist collaborating with other specialities in chronic disease, the example of diabetes

7th Young Internists Day

Chairs: L. Bosanska, R. Duckett

L. Bosanska (Germany): Young Internists in Europe – Introduction

Clinical Gymnasium – Interactive case presentations

Moderators: C. Davidson (UK), S. Rigby (UK), L. Dagna (Italy)

Your Opinion Counts! Discussion round

Moderators: R. Duckitt (UK), C. Araujo (Portugal)

Lecture Mind the gap: the transition to hospital consultant

M. Westerman (The Netherlands)

Other proposals

Main topics in parallel sessions

Stroke

Current trends in pharmacotherapy of internal diseases

Antithrombotic treatment

Antidiabetic drugs

Biological therapy

Antibiotic therapy

Current controversies debates:

L. Kotik (Czech Republic), other speaker TBD: Invasive or conservative treatment of CAD?

Case reports

Industry – related satellite

IMPORTANT DATES

12 December, 2012	Online Registration starts
1 February, 2013	Abstract Submission starts
31 May, 2013	Abstract Submission Deadline
30 June, 2013	Early Registration Deadline
25 September, 2013	Late Registration Deadline
2–5 October, 2013	EFIM 2013 – 12 th European Congress of Internal Medicine

CONGRESS VENUE

The EFIM 2013 will be held at the Prague Congress Centre (PCC) which is ideally located near the city centre with a panoramic view of Prague Castle. It is easily accessible by both public and private transport. It has its own metro station and extensive parking facilities.



Address: Prague Congress Centre, Třída 5. května 65, 140 21 Prague 4, Czech Republic
Tel.: +420 261 171 111, www.kcp.cz

REGISTRATION FEES

	EARLY until 30. 6. 2013	LATE until 25. 9. 2013	ON-SITE
Delegates	525 €	575 €	650 €
Young Internists (up to 35 years)*	315 €	345 €	410 €

**Should you apply for this fee, kindly send a scanned copy of any relevant ID as a proof of your age to the congress secretariat: efim2013@guarant.cz or by fax: +420 284 001 448.*

The registration fee includes:

- Admission to all Congress Scientific Sessions
- Invitation to the Opening Ceremony and Welcome Cocktail
- Admission to the Exhibition Area
- Congress Bag, Congress Documents, Final Programme
- Free PUBLIC TRANSPORT TICKET (received on-site at the registration desk and will be valid within the dates of the congress)
- Coffee Breaks

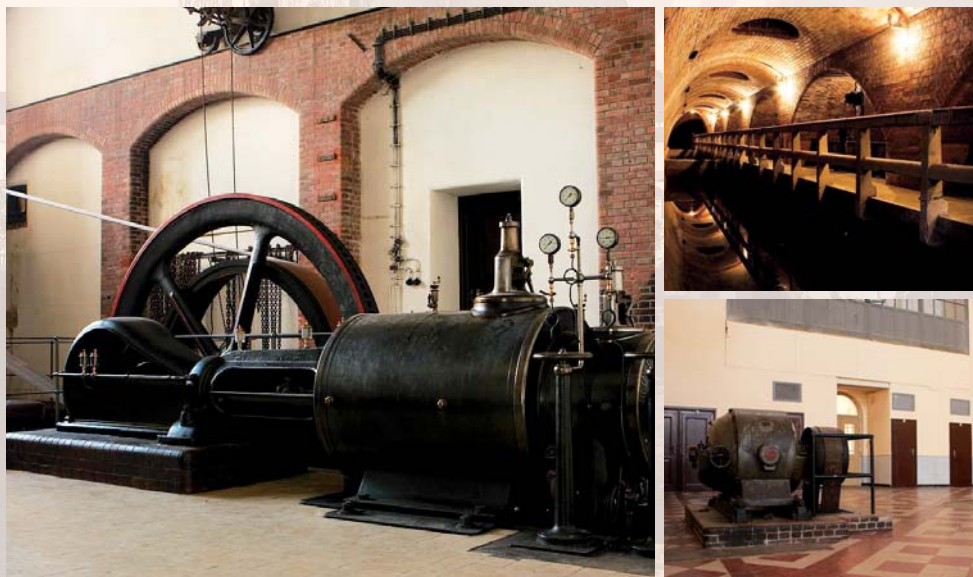
ACCOMMODATION

A number of hotels of various categories at special rates are available for participants of EFIM congress. All hotels will be located within a reasonable distance from the Prague Congress Centre. Please visit the website www.efim2013.org for current offers.

PROGRAMME OF EVENTS – OPTIONAL

Reception at Old Waste Water Treatment Plant

Date	Thursday, October 3, 2013
Time	20:00
Place	Old Waste Water Treatment Plant
Price (early bird)	55 EUR
Transportation	Transfers to and from the Reception will be organized



Reception at Old Waste Water Treatment Plant includes buffet style dinner

The Reception will be held in the Old Waste Water Treatment Plant (former Ecotechnical Museum) a unique building of Czech Industrial Art-Nouveau Style of the beginning of the 20th century. Due to still functional system of treating waste water and well preserved steam engines Breitfeld & Daněk from 1903, the plant was pronounced as Czech National Cultural Landmark. The Plant is a fitting venue for this kind of event as nowadays it serves as a lively meeting place and center of debate and research in various fields which can host up to 550 persons.

COMMITTEES

Executive Committee of EFIM

Maria Domenica Cappellini (*President*)
Ramon Pujol Farriols (*Past President*)
Jan Willem F. Elte (*Secretary-General*)
Faustino Ferreira (*Treasurer*)
Frank Bosch (*President Elect*)
Lubos Kotik (*Officer*)
Serhat Ünal (*Officer*)
Lenka Bosanska (*Young Internists Chair*)
Christopher Davidson (*President ESIM*)
Daniel Sereni (*President of the Foundation*)
Ugo E. F. Carcassi (*Honorary President*)

Founder Members of EFIM

Yves Le Tallec, France (*deceased*)
Ugo Carcassi, Italy
Christopher Davidson, England
Philippe Jaeger, Switzerland
Jaime Merino Sanchez, Spain
Michel Lambert, France

Local Organizing Committee



Richard Ceska
Congress President EFIM 2013



Jiri Widimsky



Jindrich Spinar



Miroslav Soucek



Michal Vrablik

PARTNERS

Platinum Partner

ZENTIVA
A SANOFI COMPANY

Silver Partner

Actavis

Supporter

AMGEN

GENERAL INFORMATION

Official Language

The official language of the Congress is English.

Time Zone

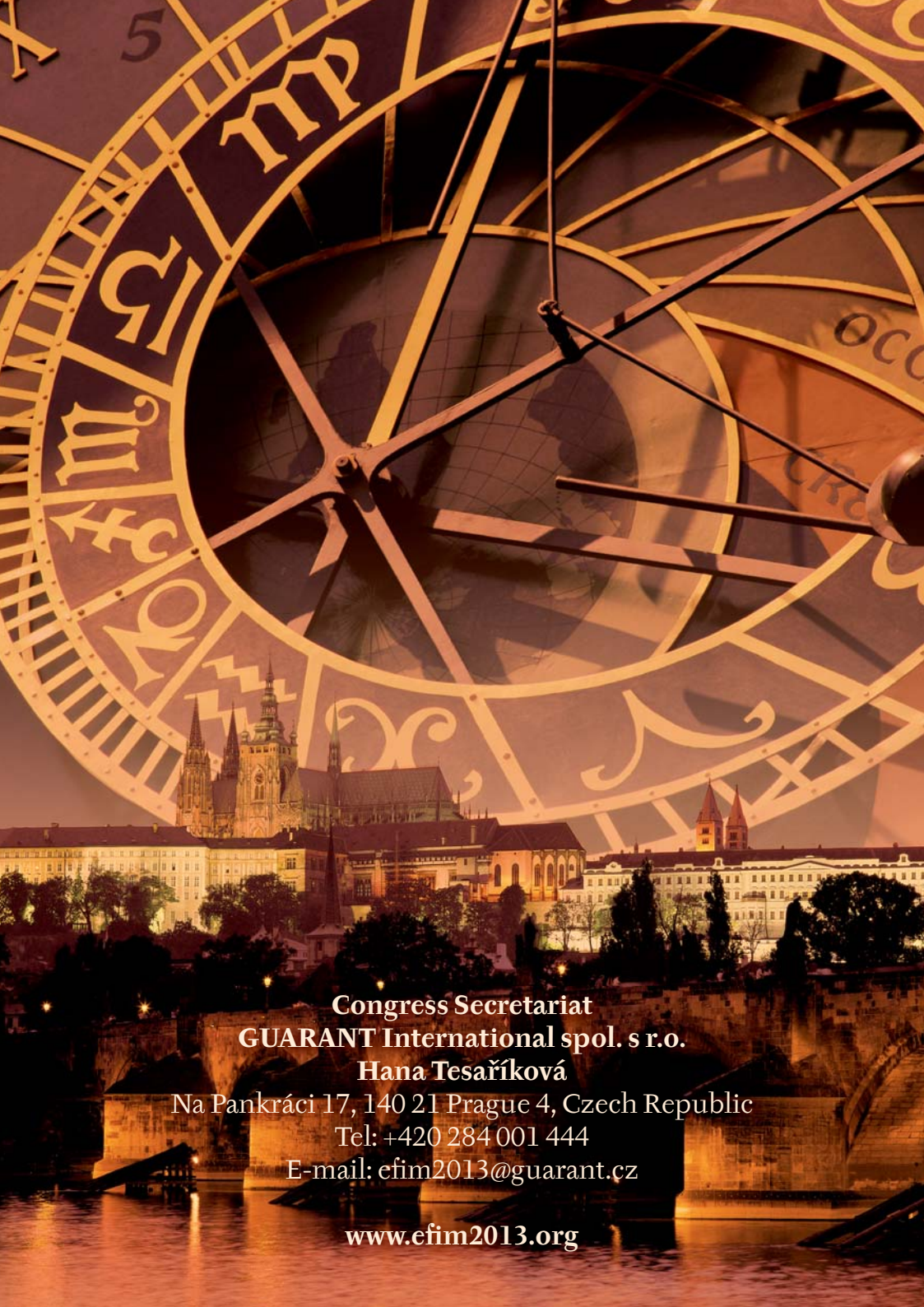
The Czech Republic is on Central European Time (CET) – Greenwich Mean Time (GMT) plus 1 hour. From April to October, along with the rest of the CET zone, the Czech Republic observes summer time, i.e. GMT + 2 hours.

Currency and Banking

Czech Crowns are the official currency in the Czech Republic. Foreign currency exchange is available at Prague International Airport and at most hotels, banks and exchange offices throughout the city. International credit cards are accepted for payment in hotels, restaurants and shops. Paying by cash in Euro is also possible in some restaurants and shops.

Czech Language

Hi	Ahoj
Hello	Dobrý den
Good evening	Dobrý večer
Good night	Dobrou noc
How are you?	Jak se máte?
I am fine	Mám se dobře
Thank you	Děkuji
How much is it?	Kolik to stojí?
Would you like to go for a beer?	Nechceš jít na pivo?
Beer	Pivo
One	Jedna
Two	Dvě
Three	Tři
The bill, please	Účet, prosím
Please	Prosím
Excuse me	Omluvte mě



Congress Secretariat
GUARANT International spol. s r.o.
Hana Tesaříková

Na Pankráci 17, 140 21 Prague 4, Czech Republic

Tel: +420 284 001 444

E-mail: efim2013@guarant.cz

www.efim2013.org