

Association between atrial fibrillation and outcomes in patients with heart failure and preserved ejection fraction: finding from the RICA registry

M. Montero Perez-Barquero, JM. Cepeda Rodrigo, A. Urrutia De Diego, F. Formiga Perez, A. Conde Martel, B. Roca Villanueva, JC. Trullas Vila, JM. Cerqueiro Gonzalez, MF. Davila Ramos, FJ. Carrasco Sanchez and RICA investigators. Córdoba, Alicante, Badalona, Barcelona, Las Palmas, Castellon, Gerona, Lugo, Tenerife, Huelva, Spain.

PURPOSE

Atrial fibrillation (AF) is commonly associated with Heart failure (HF). We aimed to analyze the impact of AF among a contemporary cohort hospitalized patients with HF with preserved ejection fraction (HFPEF; EF > 45%).

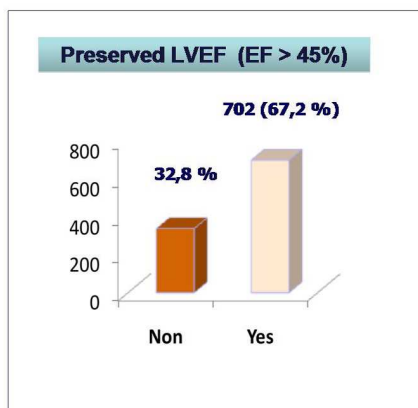
METHODS



- We evaluated the association between AF with the composite of all-cause mortality or readmissions in the RICA registry.
- This is a multi-center and prospective cohort study that includes patients admitted due to decompensated HF.
- We performed Kaplan-Meier survival curves and adjusted hazard ratio (HR) by multivariable Cox regression model.

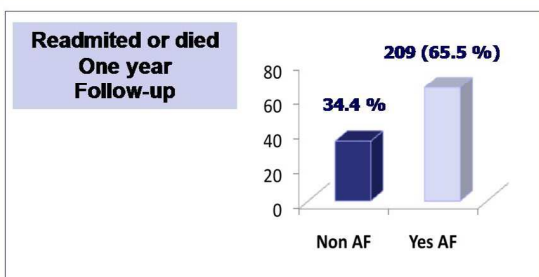
RESULTS

• RICA Registry: Patients: 1045; Mean age 77 (± 8.5); women 54,9%

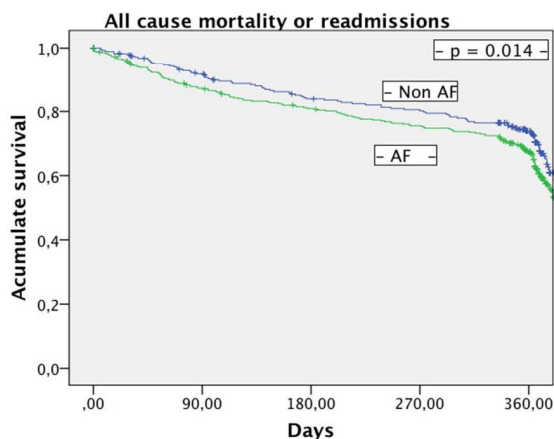


702 patients with Heart failure preserved ejection fraction:

- 408 (50.8%) had AF.
- 319 (45.4%) were readmitted or died.



p < 0.001



	p	HF	CI 90%
Atrial fibrillation	0.09	1.27	1.01 – 1.50
Diabetes	0.03	1.30	1.07 – 1.59
Myocardial infarction	0.09	1.28	1.01 – 1.64
BMI	< 0.01	0.96	0.94 – 0.98
GFR _e mL/min (MDRD)	< 0.01	0.97	0.95 – 0.99
Sex (Men)	0.03	0.77	0.63 – 0.94
NYHA II	0.78	1.09	0.67 – 1.76
- III	0.02	1.96	1.20 – 2.20
- IV	< 0.01	5.21	2.82 – 9.61
Beta-blocker	< 0.01	0.64	0.53 – 0.77
Age	< 0.01	1.03	1.02 – 1.04

CONCLUSION

More than half of elderly patients hospitalized for HF had preserved ejection fraction. Atrial Fibrillation is an important prognostic marker in these patients.