



Influence of chronic use of corticosteroids and calcineurin inhibitors on COVID-19 clinical outcomes: analysis of a nationwide registry



Jorge Calderón-Parra¹, Valentín Cuervas-Mons^{1,2}, Víctor Moreno-Torres^{1,*}, Manuel Rubio-Rivas³, Paloma Agudo-de Blas⁴, Blanca Pinilla-Llorente⁵, Cristina Helguera-Amezua⁶, Nicolás Jiménez-García⁷, Paula-María Pesqueira-Fontan⁸, Manuel Méndez-Bailón⁹, Arturo Artero¹⁰, Noemí Gilabert¹¹, Fátima Ibáñez-Estélez¹, Santiago-Jesús Freire-Castro¹², Carlos Lumbreras-Bermejo⁴, Juan-Miguel Antón-Santos¹³,
On behalf of the SEMI-COVID-19 Network. A complete list of the SEMI-COVID-19 Network members is provided in the Appendix

¹ Department of Internal Medicine, Hospital Universitario Puerta de Hierro Majadahonda, Madrid, Spain

² Faculty of Medicine, Autonomous University of Madrid, Madrid, Spain; IDIPHISA (Madrid)

³ Department of Internal Medicine, Hospital Universitario de Bellvitge, L'Hospitalet de Llobregat, Barcelona, Spain

⁴ Department of Internal Medicine, Hospital Universitario 12 de Octubre, Madrid, Spain

⁵ Department of Internal Medicine, Hospital Universitario Gregorio Marañón, Madrid, Spain

⁶ Department of Internal Medicine, Hospital de Cabueñes, Gijón, Asturias, Spain

⁷ Department of Internal Medicine, Hospital Costa del Sol, Marbella, Málaga, Spain

⁸ Department of Internal Medicine, Hospital Clínico de Santiago de Compostela, A Coruña, Spain

⁹ Department of Internal Medicine, Hospital Clínico San Carlos, Madrid, Spain

¹⁰ Department of Internal Medicine, Hospital Universitario Dr Peset, Valencia, Spain

¹¹ Department of Internal Medicine, Hospital Universitario La Princesa, Madrid, Spain

¹² Department of Internal Medicine, Hospital Universitario de A Coruña, A Coruña, Spain

¹³ Department of Internal Medicine, Hospital Universitario Infanta Cristina, Parla, Madrid, Spain

ARTICLE INFO

Article history:

Received 3 November 2021

Revised 7 December 2021

Accepted 8 December 2021

Keywords:

COVID-19

immunocompromised host

prognosis factors

solid organ transplantation

autoimmune diseases

immune-mediated inflammatory diseases

ABSTRACT

Objectives: The aim of this study was to analyze whether subgroups of immunosuppressive (IS) medications conferred different outcomes in COVID-19.

Methods: The study involved a multicenter retrospective cohort of consecutive immunosuppressed patients (ISPs) hospitalized with COVID-19 from March to July, 2020. The primary outcome was in-hospital mortality. A propensity score-matched (PSM) model comparing ISP and non-ISP was planned, as well as specific PSM models comparing individual IS medications associated with mortality.

Results: Out of 16 647 patients, 868 (5.2%) were on chronic IS therapy prior to admission and were considered ISPs. In the PSM model, ISPs had greater in-hospital mortality (OR 1.25, 95% CI 0.99–1.62), which was related to a worse outcome associated with chronic corticoids (OR 1.89, 95% CI 1.43–2.49). Other IS drugs had no repercussions with regard to mortality risk (including calcineurin inhibitors (CNI); OR 1.19, 95% CI 0.65–2.20). In the pre-planned specific PSM model involving patients on chronic IS treatment

Abbreviations: AHF, acute heart failure; AKI, acute kidney injury; ARDS, acute respiratory distress syndrome; CCI, Charlson comorbidity index; CHF, chronic heart failure; CI, confidence interval; CNI, calcineurin inhibitors; COPD, chronic obstructive pulmonary disease; CRF, chronic renal failure; CRP, C-reactive protein; DIC, diffuse intravascular coagulopathy; LDH, lactate dehydrogenase; HR, hazard ratio; ICU, intensive care unit; IHD, ischemic heart disease; IQR, interquartile range; IS, immunosuppressive; ISP, immunosuppressed patient; IMID, immune-mediated inflammatory disease; MOF, multiple organ dysfunction syndrome; OR, odds ratio; RT-PCR, real-time polymerase chain reaction; SOT, solid organ transplant.

* Corresponding author: Moreno-Torres, Víctor, MD, Unidad de Enfermedades Autoinmunes Sistémicas, Servicio de Medicina Interna, Hospital Universitario Puerta de Hierro Majadahonda, Instituto de Investigación Sanitaria Puerta de Hierro-Segovia de Arana, C/ Joaquín Rodrigo nº 2, 28222 Majadahonda, Madrid, Spain. Tel: (+34) 91191268/7336; Fax: (+34) 911916807.

E-mail addresses: jorge050390@gmail.com (J. Calderón-Parra), valentin.cuervasmons@uam.es (V. Cuervas-Mons), victor.moreno.torres.1988@gmail.com (V. Moreno-Torres), mrubio@bellvitgehospital.cat (M. Rubio-Rivas), palomaagudo@gmail.com (P.A.-d. Blas), blanca.pinilla@salud.madrid.org (B. Pinilla-Llorente), cristina.hamezua@gmail.com (C. Helguera-Amezua), nijimenez93@gmail.com (N. Jiménez-García), paulapesqueira@hotmail.com (P.-M. Pesqueira-Fontan), manuelmenba@hotmail.com (M. Méndez-Bailón), arturo.artero@uv.es (A. Artero), noemigilabert@gmail.com (N. Gilabert), fatima_ibaest@hotmail.com (F. Ibáñez-Estélez), santiago.freire.castro@sergas.es (S.-J. Freire-Castro), clumbreras@gmail.com (C. Lumbreras-Bermejo), juanmi.anton@gmail.com (J.-M. Antón-Santos).

<https://doi.org/10.1016/j.ijid.2021.12.327>

1201-9712/© 2021 The Author(s). Published by Elsevier Ltd on behalf of International Society for Infectious Diseases. This is an open access article under the CC BY-NC-ND license (<http://creativecommons.org/licenses/by-nc-nd/4.0/>)

before admission, corticosteroids were associated with an increased risk of mortality (OR 2.34, 95% CI 1.43–3.82).

Conclusions: Chronic IS therapies comprise a heterogeneous group of drugs with different risk profiles for severe COVID-19 and death. Chronic systemic corticosteroid therapy is associated with increased mortality. On the contrary, CNI and other IS treatments prior to admission do not seem to convey different outcomes.

© 2021 The Author(s). Published by Elsevier Ltd on behalf of International Society for Infectious Diseases.

This is an open access article under the CC BY-NC-ND license (<http://creativecommons.org/licenses/by-nc-nd/4.0/>)

INTRODUCTION

Since the beginning of 2020, the world has faced the coronavirus disease 2019 (COVID-19) pandemic. As of November 11, 2021, more than 250 million people had contracted COVID-19 worldwide, and more than 5 million had died (Dong et al., 2020).

COVID-19 progresses with an initial viral replication phase, followed by a viral clearance phase as a result of the immune response. In some patients, SARS-CoV-2 replication in the lungs may trigger a cytokine storm that leads to the development of uncontrolled inflammation, an acute respiratory distress syndrome (ARDS), and respiratory failure; these are the main causes of death in these patients (Rodríguez-Baño et al., 2020). This uncontrolled inflammation has prompted the use of several anti-inflammatory drugs in severe cases (Horby et al., 2020).

It has been speculated that patients receiving chronic systemic corticosteroids or other immunosuppressive (IS) therapies are likely to have a lower risk of this uncontrolled inflammation (D'Antiga, 2020). In this regard, special attention should be paid to calcineurin inhibitors (CNI), including cyclosporine and tacrolimus (Gálvez-Romero et al., 2021; Solanich et al., 2021), which form the basis of immunosuppression therapy in solid organ transplant (SOT) recipients, and are also used in some patients with immune-mediated inflammatory diseases (IMID). *In vitro* studies have shown that cyclosporine and tacrolimus inhibit viral replication of several coronaviruses through binding to intracellular cyclophilins, inactivating peptidyl-prolyl cis/trans isomerase function (Ma-Lauer et al., 2020). Therefore, chronic treatment with CNI could reduce the severity of SARS-CoV-2 infection (Belli et al., 2021). On the other hand, as in other viral infections, IS therapies may lead to uncontrolled initial viral replication (Urra et al., 2020), viral immune evasion, and higher risk of mortality (Belsky et al., 2021). Data on the natural course of COVID-19 in chronically immunosuppressed patients (ISPs) are scarce and inconsistent when compared with those for the general population. Some studies suggest that ISPs have higher rates of severe COVID-19 and mortality compared with the general population, while others show just the opposite – a lower incidence of severe COVID-19 and lower mortality (Suárez-García et al., 2021; Minotti et al., 2020; Martínez-Urbistondo et al., 2021)

In the light of the above, our study aimed to assess whether patients receiving certain IS treatments – corticosteroids and CNI in particular – may be at different risk of severe COVID-19 and adverse outcomes compared with the non-immunosuppressed population.

PATIENTS AND METHODS

Study population and participants

This was a retrospective cohort study of all adult patients (18 years of age or older) admitted to hospital for the first time due to COVID-19, in 150 hospitals across Spain, from March to July,

2020, and who had reached a hard endpoint (death or hospital discharge). Information on the SEMI-COVID-19 registry and data collection procedures have been described in previously published works (Suárez-García et al., 2021).

The study was conducted in accordance with the Declaration of Helsinki and was approved by the Provincial Research Ethics Committee of Málaga (Spain) pursuant to the recommendation of the Spanish Agency of Medicines and Medical Products (AEMPS). All patients gave their informed consent.

Definitions and variables

SARS-CoV-2 infection was confirmed by a positive real-time polymerase chain reaction (RT-PCR) test of a nasopharyngeal exudate sample, sputum, or bronchoalveolar lavage.

Patients were defined as on IS treatment if they were receiving any immunosuppressive medication, including systemic corticosteroids, CNI (tacrolimus and cyclosporine), antimetabolites (mycophenolate, azathioprine), mTOR inhibitors (sirolimus, everolimus), and/or other immunosuppressive treatments at the time of admission. ISPs were classified either as SOT recipients or IMID patients. Due to limitations in the database, it was not possible to identify the specific IMID disease. Patients with hematological malignancies (involving active lymphoproliferative or myeloproliferative disorders, or bone marrow transplantation) or solid organ malignancies were not included in this study. ARDS and severity were defined according to the Berlin definition (Ranieri et al., 2012). Patients not receiving IS treatments prior to admission (non-IS population) were used as controls.

Study outcomes

The primary endpoint was in-hospital all-cause mortality. Secondary endpoints were 30-day mortality and in-hospital complications, including bacterial pneumonia, sepsis, septic shock, acute kidney injury (AKI), acute heart failure (AHF), myocarditis, stroke, or multiple organ dysfunction syndrome (MOF).

Statistical analysis

Quantitative variables were expressed as median and interquartile range (IQR). Categorical variables were expressed as percentages and absolute frequencies.

Clinical presentations and complications were compared between each ISP group and controls, using the chi-square test for qualitative variables (or Fisher's exact test when appropriate) and Student's *t*-test for quantitative variables (or the Mann-Whitney *U*-test when appropriate).

The influence of belonging to either ISP group (SOT recipients or IMID patients) as well as specific IS medications on mortality were analyzed by including demographic and comorbidity variables in a single-step multivariate logistic regression model, which also included the aforementioned groups (model 1) or medications

(model 2). The corrected odds ratios (OR) and 95% confidence intervals (CI) were calculated for statistically significant variables.

A survival analysis was also performed, comparing time to death between groups, with data censored at 30 days of clinical progress (30-day mortality). Time to death was modeled using Kaplan–Meier curves, and differences were assessed using stratified Cox regression models. Hazard ratios (HR) and 95% CI were determined.

In order to better estimate the influence of chronic immunosuppressive medication on clinical course and mortality, a 1:1 propensity score analysis was performed comparing ISPs with the non-IS population after matching according to sex, age, and comorbidities. A propensity score-matching analysis was also conducted for ISPs on specific medications found to be associated with mortality in comparison with ISPs who were receiving other medications. All models were required to have only exact matches. The validity of all propensity score-matching models was assessed by comparing demographic and comorbidity variables between the groups. Clinical course and mortality were also compared between groups, using the same analytical method as described above. OR and 95% CI were provided for all variables with a *p*-value < 0.10.

For all statistical analysis, two-tailed *p*-values < 0.05 were considered significant. The statistical analyses were performed using the SPSS version 25 software package (IBM SPSS Statistics).

RESULTS

In total, 16 647 consecutive adult patients hospitalized with COVID-19 were included in the registry. 1674 patients with malignancy were excluded from the analysis. Of the remaining 14 973 evaluable patients, 868 (5.79%) were considered ISPs and 14 105 (94.2%) were not. Among the ISPs, 654 patients had a prior history of IMID (4.36% overall) and 214 were SOT recipients (1.42% overall, with 151, 32, 16, and 15 undergoing kidney, liver, lung, and heart transplantation, respectively). There were 1243 prescriptions for immunosuppressive medications among the 868 ISPs. The most common treatments were glucocorticoids (593 patients, 68.3%), followed by antimetabolites such as mycophenolate, azathioprine, and methotrexate (369 patients, 42.5%), CNI (155 patients, 17.9%), and m-TOR inhibitors (65 patients, 7.5%).

The demographic characteristics, general baseline data, comorbidities, clinical presentations, and outcomes for ISPs and controls are summarized in Table 1. Overall, the mean age was 69 years and 8460 patients (56.5%) were male. The hospital mortality rate was 19.1% (2857 deaths). In the multivariate logistic regression analysis, after adjusting for age and comorbidities (Table 2), higher in-hospital mortality was found both in SOT recipients (OR 2.46, 95% CI 1.73–3.49) and IMID patients (OR 1.38, 95% CI 1.10–1.72). Among specific chronic IS treatments, only corticoids use at admission was associated with in-hospital mortality (OR 2.24, 95% CI 1.41–3.55). Interestingly, after adjusting for chronic glucocorticoid use at admission in the survival analysis (Figure 1), SOT recipients remained at higher risk of 30-day mortality (HR 1.69, 95% CI 1.23–2.35), while IMID patients had a similar risk to the general non-IS population (HR 0.86, 95% CI 0.76–1.15). On the other hand, chronic glucocorticoid use was strongly associated with 30-day mortality (HR 2.00, 95% CI 1.43–2.79)

Propensity score-matched analysis

A propensity score-matching analysis was performed for a total of 636 pairs of ISP patients and controls. Differences in clinical courses and complications between the groups are shown in Table 3. Figure 2 shows the time-to-death analysis for the groups. Although their clinical presentation was similar, in-hospital mortality was higher in patients receiving any immunosuppressive med-

ications compared with controls (25% vs 21.1%; HR 1.21, 95% CI 1.01–1.52). In this model, glucocorticoid use was associated with higher in-hospital mortality than that for the general non-IS population (OR 1.89, 95%CI 1.43–2.49), while CNI (OR 1.19, 95% CI 0.65–2.20), antimetabolites (OR 1.09, 95% CI 0.59–2.00), and mTOR inhibitors (OR 0.76, OR 0.23–2.61) were not associated with worse outcomes.

Chronic glucocorticoid treatment

A specific propensity score-matched analysis regarding chronic systemic glucocorticoid therapy confirmed that their use before admission was associated with mortality in the whole study population (OR 1.89, 95% CI 1.43–2.49). Furthermore, patients under corticoid treatment presented more in-hospital complications, such as severe ARDS (OR 1.75, 95% CI 1.05–2.91), sepsis (OR 1.99, 95% CI 1.06–4.38), septic shock (OR 3.67, 95% CI 1.19–11.36, AKI (OR 2.28, 95% CI 1.37–3.80), and MOF (OR 2.43, 95% CI 1.41–4.26). Finally, chronic systemic corticoid treatment was also associated with worse outcomes among SOT recipients (OR 1.82, 95% CI 1.01–3.30).

As planned, a separate propensity score-matching analysis for a total of 212 ISPs treated with systemic glucocorticoids, paired with ISPs without glucocorticoids, was performed. Differences in clinical courses and complications between patients with and without systemic glucocorticoids are summarized in Table 4. Figure 3 shows the time-to-death analysis for the groups. In-hospital mortality was higher in IS patients with glucocorticoids (27.8% vs 14.2%; HR 2.08, 95% CI 1.30–3.31). Interestingly, in this model, patients without glucocorticoids but with other immunosuppressive treatments had similar in-hospital mortality rates to the general non-IS population (14.2% vs 18.6%, respectively), although the groups were not statistically comparable.

Chronic calcineurin inhibitors

In the propensity score analysis, chronic CNI therapy before hospital admission was not associated with worse outcomes (OR 1.19, 95%CI 0.65–2.20). Notably, the majority of patients on CNI were SOT recipients (85.2%, 132/155). Consequently, a sub-analysis was performed to analyze the role of CNI treatment before admission in SOT patients. When chronic CNI treatment was considered, no differences regarding mortality were found (31.7% vs 32.6%, *p* = 1.000).

DISCUSSION

A recently published study involving the Spanish cohort showed that immunosuppression and immunosuppressant drugs conferred a higher death risk associated with COVID-19 (Suárez-García et al., 2021). In light of these findings, our study sought to evaluate which immunosuppressant drugs in particular were associated with this greater risk, using a propensity-score analysis. Consequently, the main finding of our study was that chronic systemic glucocorticoid therapy at admission was the strongest risk factor for death in immunosuppressed COVID-19 patients. Our study also found that immunosuppression with CNI was not associated with better outcomes.

Our results indicated that not all chronic immunosuppressive treatments may be comparable with regard to COVID-19 severity risk, as previously postulated by other authors (Pablos et al., 2020; FAI2R/SFR/SNFMI/SOFREMIP/CRI/IMIDIATE consortium and contributors, 2021). Of special relevance was the deleterious effect of chronic glucocorticoid treatment at admission on immunosuppressed patients with COVID-19, confirming that, in our previous study, the impact of immunosuppressant drugs on mortality was

Table 1
Demographic factors, comorbidities, clinical presentations, and outcomes according to patient group

Variable	Total (n = 14973)	Non-IS (n = 14105)	SOT (n = 214)	p1	IMID (n = 654)	p2
Demographic factors and comorbidities						
Age (years)	69 (56–79)	68 (55–79)	65 (54–73)	0.014	71 (60–81)	< 0.001
Sex (male)	56.5% (8460)	56.8% (8008)	62.8% (134)	0.109	48.6% (318)	< 0.001
Obesity	20.4% (3059)	22.2% (2876)	21.0% (44)	0.677	23.5% (139)	0.479
CCI	1 (0–2)	0 (0–1)	2 (1–4)	< 0.001	1 (1–2)	< 0.001
Age-adjusted CCI	3 (2–5)	3 (1–5)	4 (3–7)	< 0.001	4 (3–6)	< 0.001
Alcohol	4.2% (630)	4.4% (596)	5.1% (11)	0.710	3.7% (23)	0.425
Active smoking	4.7% (701)	5.0% (669)	3.4% (7)	0.008	4.0% (25)	< 0.001
Hypertension	50.1% (7497)	49.4% (6959)	74.8% (160)	< 0.001	57.8% (378)	< 0.001
Dyslipidemia	39.0% (5847)	38.7% (5450)	57.0% (122)	< 0.001	42.0% (275)	0.092
Diabetes mellitus	14.1% (2112)	14.0% (1972)	20.6% (44)	0.008	14.7% (96)	0.645
Cardiac failure	6.8% (1021)	6.5% (918)	10.8% (23)	0.017	12.2% (80)	< 0.001
Atrial fibrillation	10.4% (1558)	10.2% (1434)	16.9% (36)	0.002	13.5% (88)	0.007
Acute IHD	5.6% (832)	5.4% (768)	10.4% (22)	0.003	6.4% (42)	0.291
Chronic IHD	3.5% (521)	3.4% (479)	5.6% (12)	0.085	4.6% (30)	0.123
Peripheral vascular disease	4.4% (662)	4.2% (589)	10.3% (22)	< 0.001	8.0% (51)	< 0.001
COPD	6.3% (936)	6.0% (847)	4.7% (10)	0.422	12.1% (79)	< 0.001
Asthma	7.3% (1097)	7.1% (1006)	4.7% (10)	0.181	12.4% (81)	< 0.001
Stroke	2.7% (411)	2.8% (388)	2.3% (5)	0.836	2.8% (18)	1.000
Cognitive decline	9.7% (1458)	9.9% (1397)	3.3% (7)	0.002	8.3% (54)	0.179
Depression	10.3% (1545)	10.2% (1436)	8.4% (18)	0.427	14.0% (91)	0.003
CRF	5.6% (845)	4.9% (696)	46.3% (99)	< 0.001	7.7% (50)	0.003
Liver cirrhosis	0.9% (135)	0.7% (102)	7.9% (17)	< 0.001	2.5% (16)	< 0.001
Anticoagulation	10.8% (1618)	10.5% (1475)	18.7% (40)	< 0.001	15.7% (103)	< 0.001
Antiaggregation	15.2% (2273)	15.0% (2109)	23.5% (50)	0.001	17.5% (114)	0.093
Clinical presentations						
Cough	73.5% (10998)	73.8% (10375)	66.3% (142)	0.018	73.5% (481)	0.973
Arthromyalgia	30.8% (4614)	31.3% (4374)	24.6% (52)	0.043	29.0% (188)	0.225
Asthenia	42.4% (6343)	42.8% (5967)	36.5% (77)	0.068	46.8% (299)	0.073
Fever	63.3% (9472)	63.8% (8967)	59.3% (127)	0.202	58.0% (378)	0.009
Dyspnea	57.6% (8620)	57.8% (8118)	46.3% (99)	< 0.001	61.6% (403)	0.052
Diarrhea	24.4% (3659)	24.5% (3425)	34.9% (74)	0.001	24.6% (160)	0.963
Rx infiltrate	64.5% (9653)	64.5% (9102)	61.1% (149)	0.310	62.1% (402)	0.195
Lymphocytes	0.94 (0.68–1.30)	0.96 (0.70–1.30)	0.80 (0.50–1.18)	< 0.001	0.84 (0.55–1.20)	< 0.001
CRP	61 (20–130)	60 (20–128)	60 (22–106)	0.417	65 (21–141)	0.202
LDH	322 (247–434)	322 (249–432)	290 (223–338)	< 0.001	325 (253–439)	0.607
Ferritin	613 (287–1231)	612 (287–1242)	662 (333–1455)	0.324	543 (277–1043)	0.100
D-dimer	0.67 (0.37–1.26)	0.64 (0.36–1.20)	0.64 (0.37–1.24)	0.385	0.74 (0.39–1.54)	0.001
Complications and outcomes						
Severe distress	17.4% (2602)	17.3% (2428)	24.1% (51)	0.029	18.8% (123)	0.292
Bacterial pneumonia	10.6% (1590)	10.6% (1490)	9.9% (21)	0.823	12.1% (79)	0.242
Sepsis	6.4% (954)	6.3% (882)	6.6% (14)	0.886	8.9% (58)	0.009
Septic shock	4.6% (686)	4.6% (640)	4.2% (9)	0.872	5.7% (37)	0.213
ARI	13.5% (2027)	13.1% (1842)	36.3% (77)	< 0.001	16.5% (108)	0.013
ACF	5.5% (819)	5.3% (739)	8.5% (18)	0.044	9.5% (62)	< 0.001
Myopericarditis	0.9% (130)	0.8% (109)	2.4% (5)	0.010	2.5% (16)	< 0.001
AIHD	0.8% (120)	0.8% (113)	0	0.271	1.1% (7)	0.499
Stroke	0.7% (110)	0.8% (105)	0.5% (1)	0.872	0.6% (4)	0.793
DIC	1.0% (152)	1.0% (141)	0	0.179	1.7% (11)	0.077
MOF	5.7% (854)	5.5% (773)	11.8% (25)	< 0.001	8.6% (56)	< 0.001
ICU admission	9.3% (1388)	9.3% (1314)	7.5% (16)	0.407	8.9% (58)	0.731
Hospital mortality	19.1% (2857)	18.6% (2618)	32.2% (69)	< 0.001	26.0% (170)	< 0.001
COVID-related mortality	94.2% (2691/2857)	94.2% (2465/2618)	89.9% (62/69)	0.136	96.4% (164/170)	0.207

Qualitative variables are expressed as percentage (absolute number). Quantitative variables are expressed as median (interquartile range). p1: univariate analysis between SOT and non-IS. p2: univariate analysis between IMID and non-IS. IS: immunosuppressed. SOT: solid organ transplant. IMID: immune-mediated inflammatory disease. CCI: Charlson comorbidity index. IHD: ischemic heart disease. COPD: chronic obstructive pulmonary disease. CRF: chronic renal failure. Rx infiltrate: radiological infiltrate. CRP: c-reactive protein. LDH: lactate dehydrogenase. ARI: acute renal injury. ACF: acute cardiac failure. AIHD: acute ischemic heart disease. DIC: disseminated intravascular coagulation. MOF: multiorgan failure. ICU: intensive care unit

probably attributable to chronic corticoids (Suárez-García et al., 2021). In our population, patients receiving chronic glucocorticoid therapy prior to hospital admission had similar clinical presentations, but they developed more complications, including severe ARDS, sepsis, AKI, and MOF. In addition, mortality rates were clearly higher in patients with glucocorticoids after adjusting for comorbidities and in propensity score-matched analysis. Moreover, when analyzing the different patient subgroups, chronic glucocorticoid treatment was found to be at least partly responsible for the higher mortality seen in ISPs, since it was the strongest risk factor for death. Furthermore, in our study, patients with IMID who were not on chronic systemic glucocorticoids had a comparable

in-hospital mortality to non-immunocompromised patients. Additionally, among SOT recipients (who had higher in-hospital mortality compared with the general non-IS population after adjusting for chronic corticosteroid therapy), chronic corticoid treatment was also associated with increased risk of mortality and complications.

These results may seem shocking, considering that glucocorticoids are, to date, the most effective treatment for this disease (Rodríguez-Baño et al., 2021; Horby et al., 2021). However, some smaller studies analyzing patients treated with chronic immunosuppressive medications have shown that patients receiving glucocorticoids seem to be at higher risk of death than those not receiving them (Ayala-Gutiérrez et al., 2021; Anikhindi et al., 2020;

Table 2
Multivariate analysis, by logistic multivariate regression, of association with mortality of demographic factors and comorbidities

Variable	OR	95% CI
Demographic factors and comorbidities		
Age	1.08	1.07–1.09
Sex (female)	0.58	0.52–0.65
Obesity	1.35	1.20–1.53
Charlson index	1.15	1.09–1.23
Alcoholism	1.10	0.86–1.39
Active smoking	1.05	0.95–1.16
Hypertension	1.10	0.98–1.24
Dyslipidemia	1.04	0.93–1.16
Diabetes mellitus	1.02	0.89–1.17
Cardiac failure	1.06	0.88–1.27
Atrial fibrillation	0.84	0.69–1.04
Acute IHD	0.89	0.73–1.10
Chronic IHD	1.11	0.87–1.41
Peri. vasc. disease	1.04	0.83–1.29
COPD	1.15	0.95–1.38
Asthma	0.75	0.60–0.94
Stroke	1.25	0.97–1.61
Cognitive decline	1.32	1.13–1.55
Depression	1.24	1.07–1.45
CRF	1.18	0.93–1.48
Liver cirrhosis	1.03	0.62–1.68
Anticoagulation	1.30	1.12–1.50
Antiaggregation	1.21	1.06–1.39
Model 1		
SOT	2.46	1.73–3.49
IMID	1.38	1.10–1.72
Model 2		
Corticoids	2.24	1.41–3.55
CNI	1.46	0.84–2.54
Methotrexate	0.86	0.45–1.60
Antimetabolite	1.44	0.89–2.34
mTOR	0.78	0.30–1.97

Model 1: demographic factors, comorbidities, and patient groups. Model 2: demographic factors, comorbidities, and immunosuppressive treatment drugs. All demographic and comorbidity variables are included in both models. Adjusted odds ratio and their 95% confidence intervals (CI) are included.

IHD: ischemic heart disease, COPD: chronic obstructive pulmonary disease. CRF: chronic renal failure. SOT: solid organ transplantation. IMID: immune-mediated inflammatory disease. CNI: calcineurin inhibitor

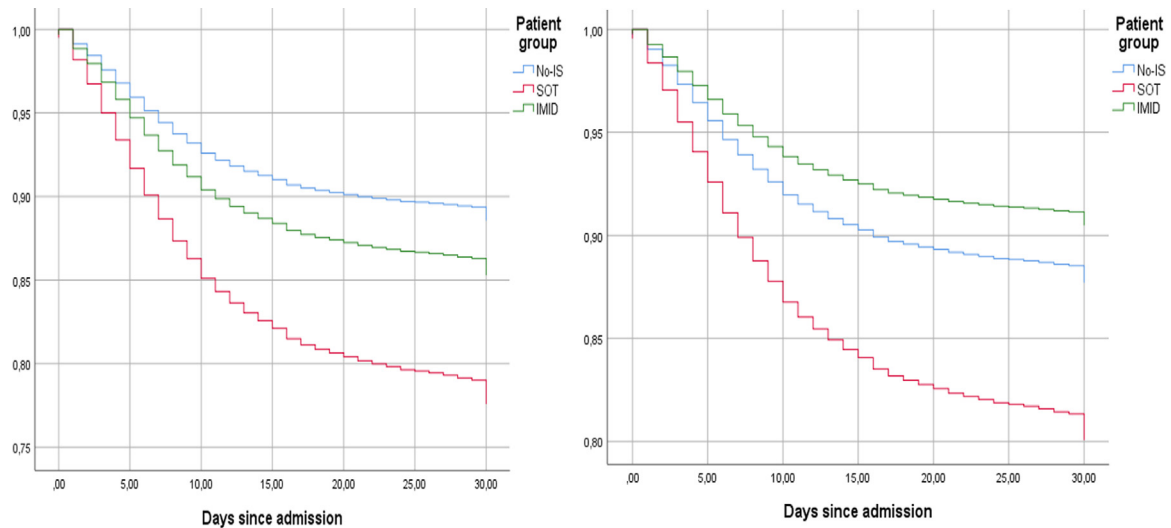


Figure 1. Time to death according to patient group (no-IS, SOT, and IMID). Kaplan-Meier curves were used to show survival trends, while stratified Cox regression was used to estimate hazard ratios and their 95% confident intervals. (A) Cox regression models were adjusted for sex, age, obesity, cognitive decline, anticoagulation, chronic renal failure, liver cirrhosis, cardiac failure, COPD. HR IMID 1.31 (95% CI 1.11–1.55, $p = 0.002$). HR SOT 2.10 (95% CI 1.63–2.70, $p < 0.001$). (B) Model A plus corticoids. HR IMID 0.86 (95% CI 0.76–1.15, $p = 0.306$). HR SOT 1.69 (95% CI 1.23–2.35, $p = 0.001$). HR corticoid 2.00 (95% CI 1.43–2.79, $p < 0.001$). IS: immunosuppressed; SOT: solid organ transplant; IMID: immune-mediated inflammatory disease; HR: hazard ratio; COPD: chronic obstructive pulmonary disease

Table 3
Analysis of patients with chronic immunosuppressive treatment at admission, matched by propensity score to non-IS patients

Variable	IS (n = 636)	Non-IS (n = 636)	p	OR	95% CI
Demographic factors and comorbidities					
Age	70 (59–78)	70 (59–78)	1.000		
Sex (male)	47.6% (303)	47.6% (303)	1.000		
Obesity	21.2% (135)	21.2% (135)	1.000		
CCI	1 (0–2)	1 (0–2)	0.102		
Age-adjusted CCI	4 (2–5)	3 (2–5)	0.123		
Alcoholism	3.1% (20)	4.4% (28)	0.190		
Smoking	4.1% (26)	5.0% (32)	0.180		
Hypertension	61.6% (392)	61.6% (392)	1.000		
Dyslipidemia	50.0% (318)	43.6% (277)	0.251		
Diabetes mellitus	13.8% (88)	13.8% (88)	1.000		
CHF	8.8% (56)	8.8% (56)	1.000		
Atrial fibrillation	12.9% (82)	12.3% (78)	0.736		
Acute IHD	8.2% (52)	7.7% (49)	0.836		
Chronic IHD	4.1% (26)	3.8% (24)	0.885		
Peri. Vasc. Dis.	8.0% (51)	7.4% (47)	0.753		
COPD	7.9% (50)	7.9% (50)	1.000		
Asthma	8.2% (52)	8.2% (52)	1.000		
Stroke	4.6% (29)	3.0% (19)	0.185		
Cognitive decline	6.6% (42)	6.6% (42)	1.000		
Depression	12.1% (77)	12.5% (79)	0.865		
CRF	10.1% (64)	10.1% (64)	1.000		
Liver cirrhosis	0.8% (5)	0.8% (5)	1.000		
Antiaggregation	21.1% (134)	20.0% (127)	0.627		
Anticoagulation	13.1% (83)	13.1% (83)	1.000		
Clinical presentations					
Cough	70.9% (457)	68.2% (432)	0.210		
Arthromyalgia	27.3% (172)	30.1% (190)	0.290		
Asthenia	43.1% (271)	42.2% (267)	0.776		
Fever	59.6% (378)	57.2% (362)	0.599		
Dyspnea	56.8% (361)	60.4% (382)	0.190		
Diarrhea	26.4% (167)	23.6% (149)	0.270		
Rx infiltrate	63.9% (403)	67.7% (423)	0.342		
Lymphocytes	0.8 (0.5–1.2)	1.0 (0.9–1.4)	<0.001	1.00	1.00–1.01
CRP	62 (22–129)	68 (18–134)	0.687		
LDH	319 (241–433)	327 (240–442)	0.627		
Ferritin	568 (284–1054)	569 (260–1156)	0.912		
D-dimer	688 (370–1362)	737 (376–1310)	0.487		
Complications and outcomes					
Severe distress	18.7% (119)	20.8% (131)	0.247		
Bact. pneumonia	10.7% (68)	12.6% (80)	0.336		
Sepsis	8.5% (54)	9.0% (57)	0.767		
Septic shock	4.6% (29)	6.8% (43)	0.091	0.83	0.68–1.01
ARI	19.0% (121)	17.6% (112)	0.562		
ACF	7.7% (49)	6.5% (41)	0.444		
Myocarditis	2.2% (14)	1.3% (8)	0.142		
Stroke	0	0.2% (1)	–		
MOF	9.0% (57)	7.2% (46)	0.304		
DIC	1.1% (7)	1.1% (7)	1.000		
ICU admission	7.9% (50)	11.2% (71)	0.045	0.83	0.71–0.98
Hospital mortality	25.0% (159)	21.1% (134)	0.055	1.25	0.99–1.62
COVID-related mortality	93.7% (149/159)	93.2% (123/134)	1.000		

Variables included in propensity score: sex, age, hypertension, obesity, CHF, COPD, asthma, liver cirrhosis, CRF, diabetes mellitus, cognitive decline, and anticoagulation. Only exact matches were allowed. Qualitative variables are expressed as percentage (absolute number). Quantitative variables are expressed as median (interquartile range). Qualitative variables were compared using the chi-squared test. Quantitative variables were compared by the Mann–Whitney U-test. Odds ratios and their 95% confident intervals are provided for variables with p-values less than 0.10.

Pablos et al., 2020; Schulze-Koops et al., 2021). Furthermore, higher mortality rates have been found even in patients taking chronic inhaled glucocorticoids (Schultze et al., 2020). It has been suggested that patients on chronic glucocorticoids have a longer incubation period and present with atypical symptoms (Han et al., 2020), probably due to a decrease in SARS-CoV-2 RNA clearance (Ma et al., 2020). In addition, some authors have found a harmful effect of glucocorticoid treatments in COVID-19 patients when they are administered too soon in the disease’s clinical course (Li et al., 2020). This has led to some experts suggesting that glucocorticoids should indeed be administered, but only at the right time (Fernández-Cruz et al., 2021). Our results support the theory that glucocorticoids should only be prescribed in the inflammatory

phase of COVID-19 (Griffin et al., 2021; Ngo et al, 2021), as it has been demonstrated that patients treated with chronic glucocorticoids during the initial stages of infection are at high risk of severe COVID-19, complications, and death.

Another point of interest is the hypothesized protective role of calcineurin inhibitors via the suppression of SARS-CoV-2 viral replication (Poulsen et al., 2020). This effect may provide benefits during both the inflammatory and first phases of COVID-19, where there is a predominance of viral replication (Griffin et al., 2021; Ngo et al., 2021). Some authors have reported favorable results for COVID-19 patients treated with cyclosporine (Guisado-Vasco et al., 2020; Gálvez-Romero et al., 2021). It has also been reported that chronic CNI treatment prior to COVID-19 may en-

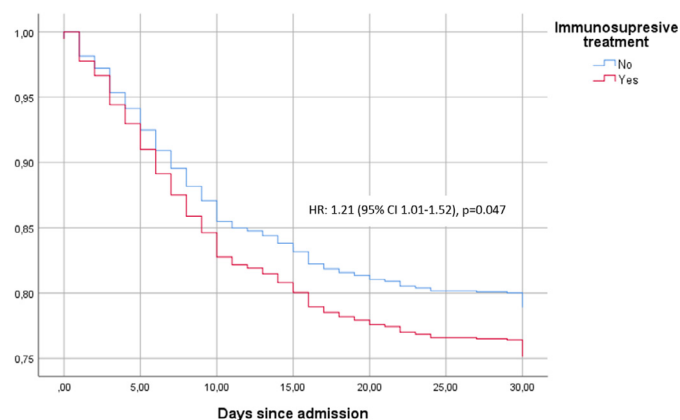


Figure 2. Time to death according to immunosuppressive treatment. Kaplan-Meier curves were used to show survival trends, while stratified Cox regression was used to estimate hazard ratios and their 95% confident intervals. HR: hazard ratio; CI: confidence interval

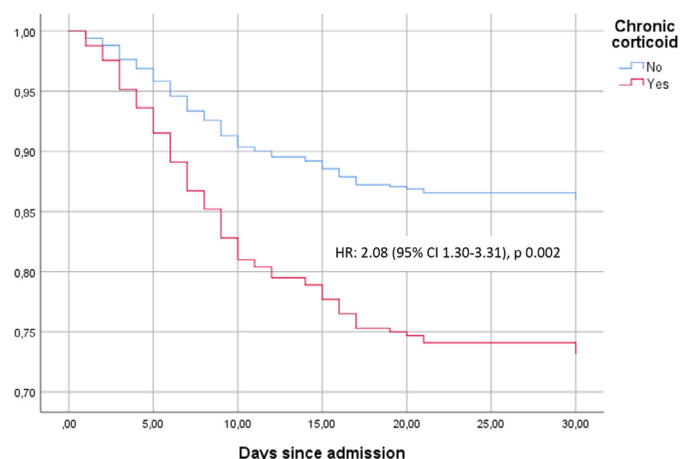


Figure 3. Time to death according to chronic corticoid treatment. Kaplan-Meier curves were used to show survival trends, while stratified Cox regression was used to estimate hazard ratios and their 95% confident intervals. Cox regression models were adjusted for other IS treatments (including CNI, mTOR inhibitors, and antimetabolites), none of which showed a significant association with time to death. HR: hazard ratio; CI: confidence interval; CNI: calcineurin inhibitor

tail a better prognosis (Belli et al. 2021). However, other studies have failed to corroborate this finding (Yin et al., 2021). Our data also suggest that CNI treatment is not associated with favorable outcomes. Indeed, SOT recipients on chronic immunosuppressive treatment with CNI at admission presented similar in-hospital mortality to those without CNI. The lack of benefit found could relate to the fact that clinically targeted concentrations of CNI are much lower than those required to inhibit viral replication (Poulsen et al., 2020; Solanich et al., 2021). Therefore, our findings support the idea that immunosuppression with CNI during the early stages of COVID-19 is not associated with favorable outcomes.

Our study did not find higher in-hospital mortality in patients with other immunosuppressive medications, including antimetabolites, methotrexate, mTOR inhibitors, tyrosine-kinase inhibitors, and anti-TNF-alpha monoclonal antibodies. After adjusting for confounding factors, none of these medications was associated with worse outcomes in hospitalized COVID-19 patients. Other authors have also noted that some immunosuppressive medications may not result in more severe COVID-19 disease (Pablos et al., 2021; Schultze et al., 2021; Han et al., 2020). This may be a result of the different biological effects of these medications and/or the

different baseline characteristics of the patients receiving the different treatments (Suárez-García et al., 2021; Calderón-Parra et al., 2021; Ward et al., 2021).

Our study showed various strengths associated with a large, multicenter cohort, but it also had several limitations. Firstly, the database was not specifically designed to analyze COVID-19 prognosis in ISPs. Therefore, some relevant variables, such as immunosuppressive medication management during hospital admission, specific IMID condition, and date of transplant in SOT patients, were not available. Secondly, not knowing the cumulative doses of steroids or the dose before the admission was another potential pitfall, since the risk of death might have depended on these (Ward et al., 2021). Thirdly, the low number of non-SOT patients treated with CNI limited the external validity of our conclusion regarding this therapy beyond SOT recipients. Finally, the paucity of patients treated with some drugs, including mTOR inhibitors, tyrosine-kinase inhibitors, anti-TNF-alpha monoclonal antibodies, and anti-CD20 monoclonal antibodies, prevented us from drawing any robust conclusions about the influence of these therapies on COVID-19 clinical outcomes. However, our results emphasized that we should identify and carefully monitor ISPs at special risk of severe COVID-19, which may include SOT recipients and those on chronic glucocorticoid therapy.

CONCLUSION

Immunosuppressant therapies form a heterogeneous group of drugs with different risk profiles for severe COVID-19 and death. While corticosteroids present a well-established benefit during the inflammatory phase in COVID-19, chronic treatment with glucocorticoids at the time of admission entails a special risk of severe COVID-19, complications, and death. On the contrary, chronic CNI treatment at the time of admission does not seem to have any effect on mortality. More studies are needed to clarify the profile of COVID-19 in different immunosuppressed patients, and the influence of specific immunosuppressive drugs on their outcomes.

Potential conflicts of interest

The authors declare no conflicts of interest.

Funding sources

No funding was received for this article.

Ethical approval statement

This study was conducted in accordance with the Declaration of Helsinki and was approved by the Provincial Research Ethics Committee of Málaga (Spain) pursuant to the recommendation of the Spanish Agency of Medicines and Medical Products (AEMPS). All patients gave their informed consent.

Acknowledgements

The authors gratefully acknowledge all the investigators who participated in the SEMI-COVID-19 Registry (supplementary appendix).

Contributions

Jorge Calderon: Study concept and design, statistical analysis, interpretation of results, drafting of manuscript, critical revision of manuscript, approval of final version of manuscript.

Valentin Cuervas-Mons: Study concept and design, interpretation of results, drafting of manuscript, critical revision of manuscript, approval of final version of manuscript.

Victor Moreno-Torres: data acquisition, drafting of manuscript, critical revision of manuscript, approved of final version of manuscript.

All other authors: data acquisition, critical revision of manuscript, approved of final version of manuscript.

Supplementary materials

Supplementary data associated with this article can be found, in the online version, at [10.1016/j.ijid.2021.12.327](https://doi.org/10.1016/j.ijid.2021.12.327).

References

- Anikhindi SA, Kumar A, Arora A. COVID-19 in patients with inflammatory bowel disease. *Expert Rev Gastroenterol Hepatol* 2020;14:1187–93 [Internet].
- Ayala Gutiérrez M, Rubio-Rivas M, Romero Gómez C, Montero Sáez A, Pérez de Pedro I, Homs N, et al. Autoimmune diseases and COVID-19 as risk factors for poor outcomes: data on 13,940 hospitalized patients from the Spanish nationwide SEMI-COVID-19 registry. *J Clin Med* 2021;10:1844 [Internet].
- Belli LS, Fondevila C, Cortesi PA, Conti S, Karam V, Adam R, et al. Protective role of tacrolimus, deleterious role of age and comorbidities in liver transplant recipients with COVID-19: results from the ELITA/ELTR multi-center European study. *Gastroenterology* 2021;160 [Internet]1151–63.e3.
- Belsky JA, Tullius BP, Lamb MG, Sayegh R, Stanek JR, Auletta JJ. COVID-19 in immunocompromised patients: a systematic review of cancer, hematopoietic cell and solid organ transplant patients. *J Infect* 2021;82:329–38 [Internet].
- Calderón-Parra J, Muñoz-Rubio E, Fernández-Cruz A, García Sánchez MC, Maderuelo-González E, López-Dosil M, et al. Incidence, clinical presentation, relapses and outcome of SARS-CoV-2 infection in patients treated with anti-CD20 monoclonal antibodies. *Clin Infect Dis* 2021:ciab700.
- D'Antiga L. Coronavirus and immunosuppressed patients: the facts during the third epidemic. *Liver Transpl* 2020;26:832–4 [Internet].
- Dong E, Du H, Gardner L. An interactive web-based dashboard to track COVID-19 in real time. *Lancet Infect Dis* 2020;20:533–4.
- FAI2R/SFR/SNFM/IOFREMIP/CRI/IMIDIATE consortium and contributors. Severity of COVID-19 and survival in patients with rheumatic and inflammatory diseases: data from the French RMD COVID-19 cohort of 694 patients. *Ann Rheum Dis* 2021;80:527–38 [Internet].
- Fernández-Cruz A, Ruiz-Antorán B, Muñoz-Rubio E, Sancho-López A, Callejas-Díaz A, Avendaño-Solá C, et al. The right time for steroids in COVID-19. *Clin Infect Dis* 2021;72:1486–7 [Internet].
- Gálvez-Romero JL, Palmeros-Rojas O, Real-Ramírez FA, Sánchez-Romero S, Tome-Maxil R, Ramírez-Sandoval MP, et al. Cyclosporine A plus low-dose steroid treatment in COVID-19 improves clinical outcomes in patients with moderate to severe disease: a pilot study. *J Intern Med* 2021;289:906–20.
- Griffin DO, Brennan-Rieder D, Ngo B, Kory P, Confalonieri M, Shapiro L, et al. The importance of understanding the stages of COVID-19 in treatment and trials. *AIDS Rev* 2021;23:40–7.
- Guisado-Vasco P, Valderas-Ortega S, Carralón-González MM, Roda-Santacruz A, González-Cortijo L, Sotres-Fernández G, et al. Clinical characteristics and outcomes among hospitalized adults with severe COVID-19 admitted to a tertiary medical center and receiving antiviral, antimalarials, glucocorticoids, or immunomodulation with tocilizumab or cyclosporine: a retrospective observational study (COQUIMA cohort). *EclinicalMedicine* 2020;28.
- Han Y, Jiang M, Xia D, He L, Lv X, Liao X, et al. COVID-19 in a patient with long-term use of glucocorticoids: a study of a familial cluster. *Clin Immunol* 2020;214 [Internet].
- Horby P, Lim WS, Emberson JR, Mafham M, Bell JLRECOVERY Collaborative Group. Dexamethasone in hospitalized patients with COVID-19. *N Engl J Med* 2021;384:693–704.
- Li Q, Li W, Jin Y, Xu W, Huang C, Li L, et al. Efficacy evaluation of early, low-dose, short-term corticosteroids in adults hospitalized with non-severe COVID-19 pneumonia: a retrospective cohort study. *Infect Dis Ther* 2020;9:823–36 [Internet].
- Ma-Lauer Y, Zheng Y, Malešević M, von Brunn B, Fischer G, von Brunn A. Influences of cyclosporin A and non-immunosuppressive derivatives on cellular cyclophilins and viral nucleocapsid protein during human coronavirus 229E replication. *Antiviral Res* 2020;173.
- Ma S, Zhang J, Wang Y, Xia J, Liu P, Luo H, et al. Glucocorticoid therapy delays the clearance of SARS-CoV-2 RNA in an asymptomatic COVID-19 patient. *J Med Virol* 2020;92:2396–7 [Internet].
- Martínez-Urbistondo M, Gutiérrez-Rojas Á, Andrés A, Gutiérrez I, Escudero G, García S, et al. Severe lymphopenia as a predictor of COVID-19 mortality in immunosuppressed patients. *J Clin Med* 2021;10:3595.
- Minotti C, Tirelli F, Barbieri E, Giaquinto C, Donà D. How is immunosuppressive status affecting children and adults in SARS-CoV-2 infection? A systematic review. *J Infect* 2020;81:e61–6.
- Ngo BT, Marik P, Kory P, Shapiro L, Thomadsen R, Iglesias J, et al. The time to offer treatments for COVID-19. *Expert Opin Investig Drugs* 2021;30:505–18.
- Pablos JL, Galindo M, Carmona L, Lledó A, Retuerto M, Blanco R, et al. Clinical outcomes of hospitalised patients with COVID-19 and chronic inflammatory and autoimmune rheumatic diseases: a multicentric matched cohort study. *Ann Rheum Dis* 2020;79:1544–9 [Internet].
- Poulsen NN, Brunn A, Hornum M, Blomberg Jensen M. Cyclosporine and COVID-19: risk or favorable? *Am J Transplant* 2020;20:2975–82 [Internet].
- Ranieri VM, Rubenfeld GD, Thompson BT, Ferguson ND, Caldwell E, et al. Acute respiratory distress syndrome: the Berlin definition. *JAMA* 2012;307:2526–33.
- Rodríguez-Baño J, Pachón J, Carratalà J, Ryan P, Jarrín I, Yllescas M, et al. Treatment with tocilizumab or corticosteroids for COVID-19 patients with hyperinflammatory state: a multicentre cohort study (SAM-COVID-19). *Clin Microbiol Infect* 2021;27:244–52.
- Schultze A, Walker AJ, MacKenna B, Morton CE, Bhaskaran K, Brown JP, et al. Risk of COVID-19-related death among patients with chronic obstructive pulmonary disease or asthma prescribed inhaled corticosteroids: an observational cohort study using the OpenSAFELY platform. *Lancet Respir Med* 2020;8:1106–20 [Internet].
- Schulze-Koops H, Krueger K, Vallbracht I, Hasseli R, Skapenko A. Increased risk for severe COVID-19 in patients with inflammatory rheumatic diseases treated with rituximab. *Ann Rheum Dis* 2021;80:e67 [Internet].
- Solanich X, Antolí A, Rocamora-Blanch G, Padullés N, Fanlo-Maresma M, Iriarte A, et al. Methylprednisolone pulses plus tacrolimus in addition to standard of care vs. standard of care alone in patients with severe COVID-19. A randomized controlled trial. *Front Med (Lausanne)* 2021;8.
- Suárez-García I, Perales-Fraile I, González-García A, Muñoz-Blanco A, Manzano L, Fabregate M, et al. SEMI-COVID-19 network. In-hospital mortality among immunosuppressed patients with COVID-19: analysis from a national cohort in Spain. *PLoS One* 2021;16.
- Urra JM, Cabrera CM, Porras L, Ródenas I. Selective CD8 cell reduction by SARS-CoV-2 is associated with a worse prognosis and systemic inflammation in COVID-19 patients. *Clin Immunol Orlando Fla* 2020;217.
- Ward D, Gørtz S, Ernst MT, Andersen NN, Kjær SK, Hallas J, et al. The effect of immunosuppressants on the prognosis of SARS-CoV-2 infection. *Eur Respir J* 2021 Sep 2.
- Yin S, Wang X, Song T. Tacrolimus use and COVID-19 infection in patients after solid organ transplantation. *Gastroenterology* 2021 [Internet].